

T Screen Deco

Decorative | 3% 5% openness



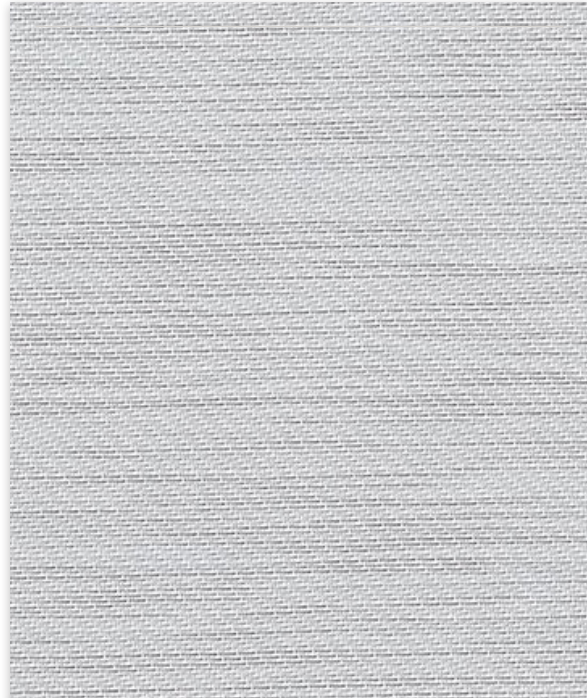
3%

00D088 | Toffee



5%

00D088 | Toffee



00D064
Cream



00D065
Cappuccino



00D067
Mocha



00D066
Espresso

Fabrics sampled on waterfall are 5% openness.

Specifications

Item Number	3% 006603 5% 006605
Product Category	Decorative
Fabric Style	Satin
Openness Factor	3% & 5%
Composition	36% Fiberglass 64% Vinyl
UV Blockage	Approximately 95% - 97%
Standard Packaging	Rolls of 30 ly (27 lm)
Width	122 in (310 cm)
Weight	3% 12.98 oz/yd ² (440 g/m ²) ±5% 5% 11.89 oz/yd ² (403 g/m ²) ±5%
Thickness	3% 0.028 in (0.71 mm) ±5% 5% 0.028 in (0.70 mm) ±5%

Classifications

Fire Classifications	NFPA 701-10 TM#1, California U.S. Title 19, CAN/ULC-S109-03 Small Flame Test
Bacterial & Fungal Resistance Environment	ASTM E2180, ASTM G21 RoHS - Lead Free, GREENGUARD Gold

Fabrication

Cutting: Cold, Ultrasonic or Crush | **Welding:** Radio Frequency, High Frequency, Impulse, Hot Air or Wedge
We recommend testing all cutting and welding methods prior to use to confirm they meet your individual fabric specifications.

T Screen Deco

ITEM	COLOR	SIDE*
00D088	Toffee	Streetside Roomside
00D064	Cream	Streetside Roomside
00D065	Cappuccino	Streetside Roomside
00D067	Mocha	Streetside Roomside
00D066	Espresso	Streetside Roomside

F A B R I C						F A B R I C + G L A S S							
Rs (%)		As (%)		Ts (%)		Rv (%)		Tv (%)		SHGC % Improvement		SHGC	
3	5	3	5	3	5	3	5	3	5	3	5	3	5
61	56	26	29	13	15	66	61	12	13	47	45	0.34	0.38
40	38	45	47	15	15	44	42	13	14	34	32	0.46	0.47
64	62	20	20	16	18	69	67	15	16	50	47	0.33	0.35
54	51	28	31	18	18	59	55	16	17	42	39	0.39	0.41
61	57	25	27	14	16	65	61	12	14	47	45	0.35	0.37
43	38	41	45	16	17	44	39	14	14	34	29	0.45	0.48
57	52	31	34	12	14	61	56	11	12	45	42	0.36	0.40
30	28	57	57	13	15	31	28	12	13	26	24	0.51	0.54
55	49	34	38	11	13	59	53	10	12	45	39	0.37	0.41
24	20	64	66	12	14	26	22	11	13	24	21	0.54	0.57

*Roomside: identified by the fabric side; Streetside: identified by the coated side.

Warranty

5 Year Exterior & 10 Year Interior

Care & Cleaning

Remove dust with vacuum cleaner or compressed air. Do not scrub. Do not use solvents or any abrasive substance which might damage the coating of the fabric. Clean with a sponge or a soft brush dipped in soapy water using mild detergent. Rinse with clean water. Leave the blind down until completely dry. You can also very gently rub the fabric with a clean white pencil eraser to remove small stains.

The fabric performance tests were conducted in accordance with ASTM E891 & ASTM E903-96: Solar Transmittance (Ts), Solar Reflectance (Rs), Solar Absorptance (As), Visible Reflectance (Rv), and Visible Transmission (Tv). Glass performance tests for Solar Heat Gain Coefficient (SHGC) were conducted using the Lawrence Berkeley National Laboratory Window 7.3 NFRC certified software. SHGC % improvement for commercial applications is based on a standard commercial glass makeup of Double Glazing 6 mm / 1/2" air / 6 mm with low E on surface #2. SHGC for residential applications is based on a default residential glass makeup of 3mm clear glass / 1/2" air / 3mm clear glass. Results for SHGC were obtained using the center of glass. For up-to-date test results, performance specifications and larger samples, contact the Mermet Technical Department at: www.mermetusa.com.

Mermet Corporation
5970 N. Main Street ■ Cowpens, SC 29330
Ph 1.866.902.9647 ■ info@mermetusa.com

mermetusa.com